



Through connection block type BPP2- 3B1 for rated voltage 500V



Through connection block type BPP2-3B1 is a device designed for use in underground mining pits in non-explosive coal dust conditions and on the ground.

Through connection block type BPP2-3B1 is designed for connecting and distributing power in mine three-phase grid with isolated star point transformer (IT system) for rated grid voltage of 500V.

Wires are connected to the block via clamps through cable glands.

TECHNICAL DATA:

ingress protection	IP54
insulation rated voltage of main circuits	660 V
rated power supply voltage	3x500V,50Hz,sieć IT
rated current of the first outlet	160, 250 A
rated current of the second outlet	160, 250, 400 A
rated current of the third outlet	160 A
number of outlets	3
dimensions	1500 x 750 x 350mm (H x W x D)

CONSTRUCTION

The through connection block is composed of a housing mounted on a frame construction, equipped with brackets. The frame construction allows the device to be hung on the pit wall.

MODE OF OPERATION

Through connection block type BPP2-3B1 is equipped with a main switch Q and fuse switches Q1 – Q3 on the outlets. Every position of the main switch Q can be locked by putting a lock on the switches drive lever. Control of the outlets is carried out through the drive lever of the switch in „on/off” position.

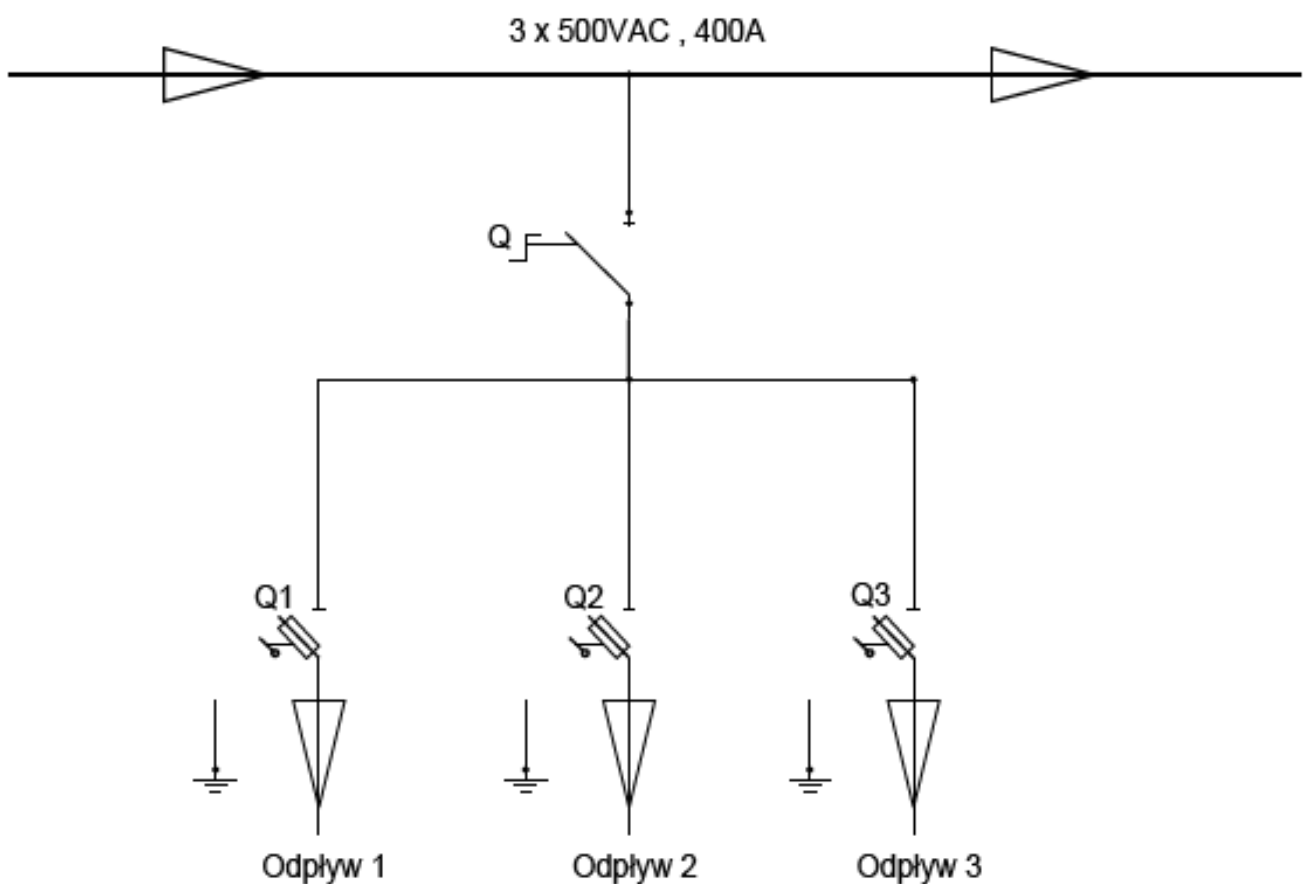
SCHEMATIC DIAGRAM

Legend:

Odplyw 1,2,3 – outlet 1,2,3

Q – switch disconnector

Q1-Q3 – switch fuse disconnector



Orders should be submitted in writing or by fax to the address: